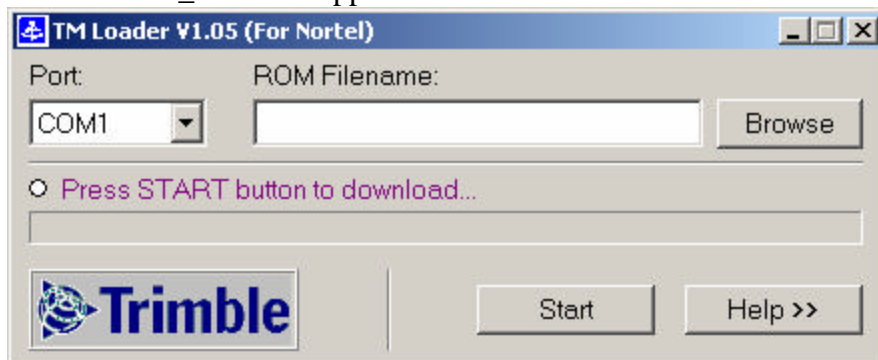


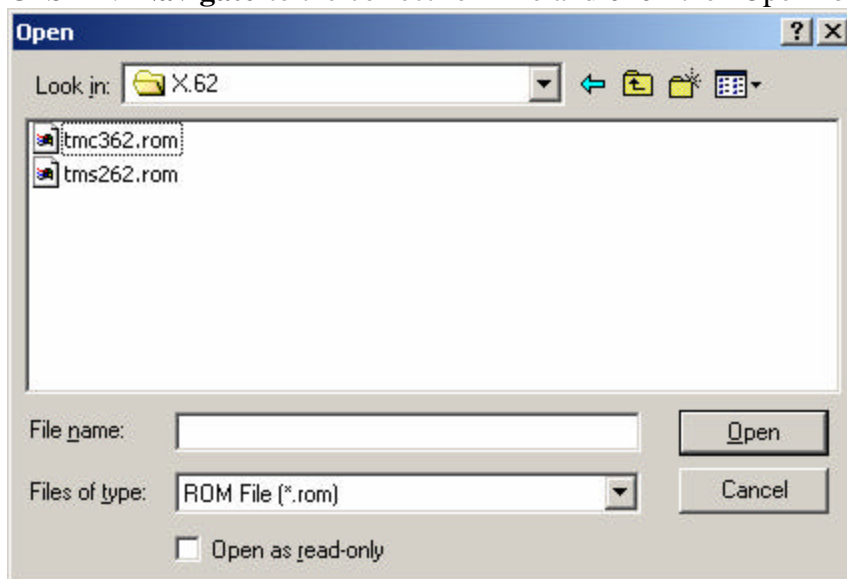
Procedure for using the “TM Loader” GPSTM GUI

This process takes less than 5 minutes to complete.
Should the upgrade fail, restart the procedure from the beginning.
This procedure applies to the GPSTM (NTGS50AA, NTB50AA) as well as the EBSCTM (NTPB15AA, NTPB15AB).

1. **Connect** the PC to the GPSTM unit that requires upgrading via a DB9 serial cable.
2. **Start** the TM_Load.exe application.



3. **Choose** a firmware rom file to download to the GPSTM by **clicking** the “Browse” button. If you do not choose a file now, you will be prompted later. Ensure that the correct firmware is chosen. The 1.x and 2.x streams of firmware are for the NTGS50AA “original” GPSTM. The 3.x stream of firmware is for the NTB50AA “Dual Voltage” GPSTM. **Navigate** to the correct rom file and **click** the “Open” button.



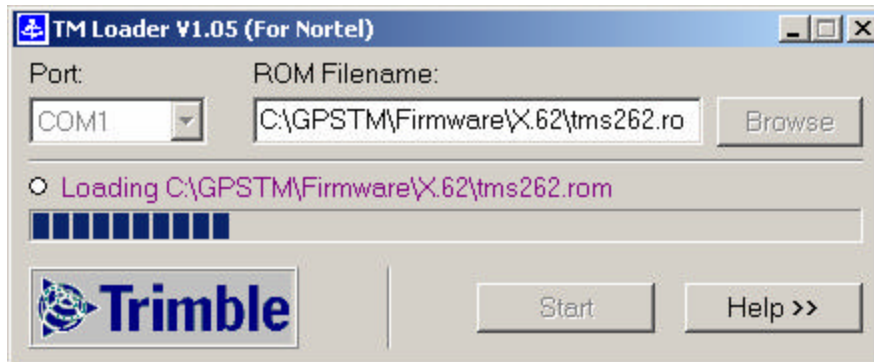
4. **Click** the “Start” button to begin the download.

This is a Service Impacting Action! Ensure that the BTS is shutdown so as to not affect any active calls.

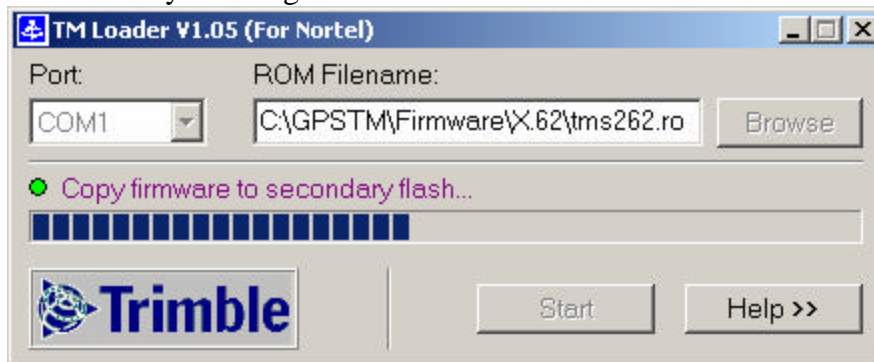
A software DEMON program is downloaded to the GPSTM.

If you did not select a rom file in step 3, you are prompted to select one now.

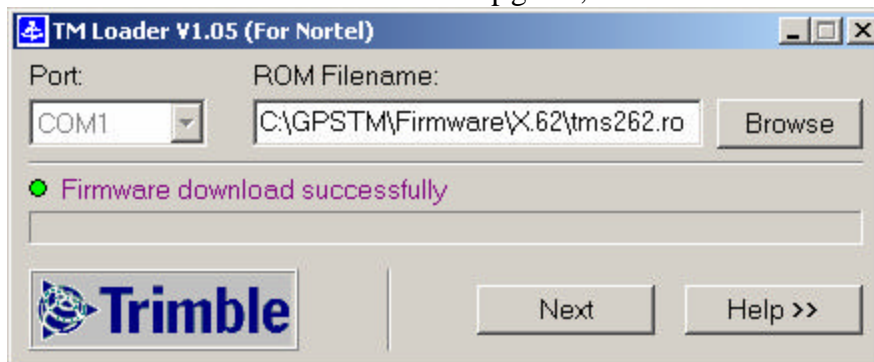
5. The firmware rom file is now downloaded to the GPSTM. A progress bar on the GUI indicates the status of the download.



6. After the firmware is downloaded, the GUI resets the GPSTM and copies the firmware to the secondary flash region.



7. The firmware upgrade is now complete. The GUI is ready to upgrade another GPSTM. If there is another unit to upgrade, **connect** the PC to the new unit and **click** the “Next” button. If there are no more units to upgrade, **close** the GUI.



8. The GPSTM is now ready for service. (It is not necessary to reset the GPSTM.)